

Industrial Unmanaged Gigabit POE++ Switch

6-Port PoE+/++ Gigabit incl 1x1.25G SFP, 1x60W PD Port

IG-641BT-1.25G

airlive®



802.3bt
90w

Gigabit
RJ45 & SFP

60W PoE
PD Port

PoE
Watchdog

Hardware
VLAN

Dual Power inputs
48~55Vdc

-40°C~85°C

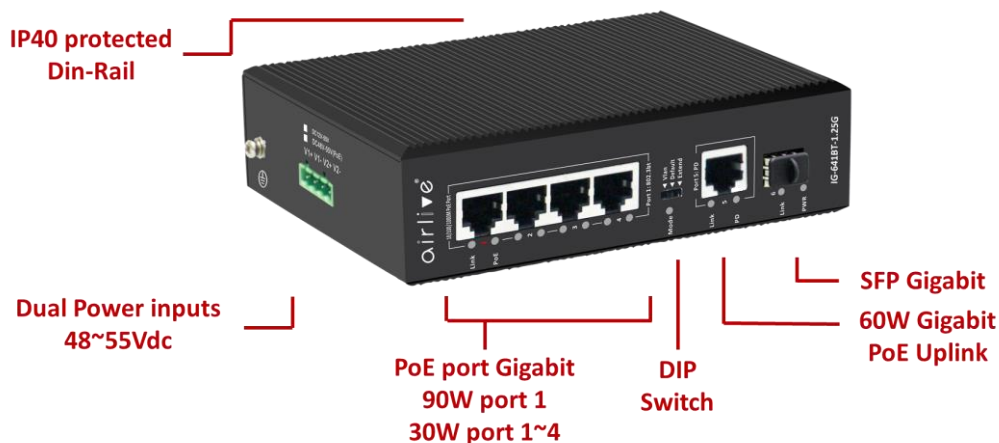
IP40, Din-Rail &
Wall-Mount

Overview

6-Port Gigabit PoE Switch with VLAN and 90W 802.3bt High PoE port

Compliant with the latest PoE technology 802.3bt/at/af, the AirLive IG-641BT-1.25G Gigabit switch supports high power, port 1 up to 90W (802.3bt), and Port 2~4 up to 30W/each (802.3at), with 1 SFP port and 1 Gigabit PD Uplink port which can receive up to 60W PoE Power and power on the switch. The switch automatically detects and adaptively supplies needed power to connected PoE devices; for non-PoE devices, it will just transfer data intelligently.

For the application where management is not really needed but VLAN is useful and budget is controlled, the AirLive IG-641BT can help. Using a smart DIP-switch to turn the IG-641BT VLAN feature and PoE Watch dog on. Moreover Port 4 can support data and power up to 250meter at 10Mbps over Cat.5e cable that help where a PD is installed far away, and power source is hard to get.



Features

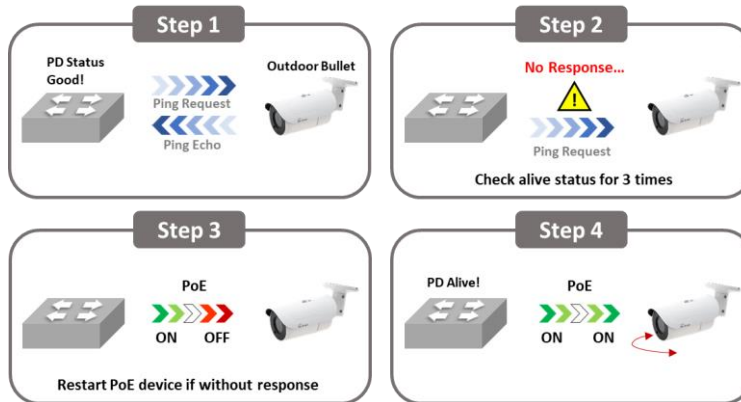
- All 6-port, each port delivers Gigabit high speed
- Extend the network further with 1 x SFP slots that accept fiber transceivers and go beyond the limits of Ethernet
- High PoE power, supports 802.3bt PoE++ up to 90W for port 1.
- Automatically detect and offer power for connected PD
- Supports the PoE power supply of the uplink port, which can receive power up to 60W.
- Support PoE watchdog when in VLAN mode
- VLAN port Isolation
- Extended transmission of up to 250M (PoE port 4) in Extend Mode

Efficient PoE Watch dog technology

The Switch IG-641BT-1.25G supports PoE Watchdog when the Dip Switch is switches to either VLAN mode or Extend mode. After PoE Watchdog function enabled, the IG-641BT-1.25G switch works as a virtual security guard. When the POE port is continuously powered but there is no traffic, the PoE watchdog will be triggered. After 2 minutes of detection, the power supply will be stopped and then powered on.

The PoE watchdog is particularly useful for cameras. For example, when the switch is turned on, it will recognize the front camera 24 hours a day, 7 days a week. If there is no data traffic from the camera, the camera is considered to be frozen, and the PoE watchdog is used to restart the front camera to solve the problem.

**Note: Function available in VLAN or Extend Mode*



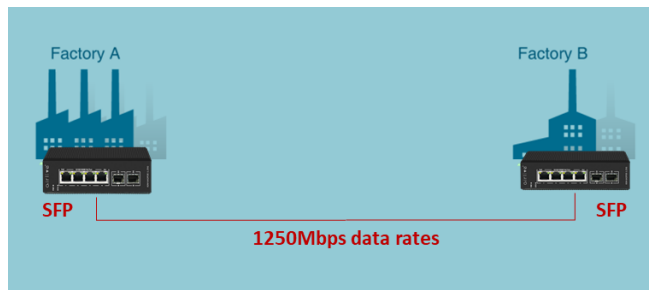
Wide temperature coverage from -40°C ~ 85°C

The IG-641BT-1.25G switch can operate from -40°C ~ 85°C. And each POE port has 6KV surge protection. It is the ideal solution for applications which work under harsh environment and require stable network and PoE power, such as parking lot or IP surveillance. The IG-641BT-1.25G has a rugged high strength compact size metal case which is rated at IP40 and has a DIN35 Rail connection making it ideal for network use in a heavy industry or factories. It can be placed in almost any harsh environment.



Fiber backbone for Long Distance

Extend the network further with SPF slots. Use the IG-641BT-1.25G as a backbone of your network, can reach up to 20KM in speed 1250Mbps data transmission.



Industrial Unmanaged Gigabit POE++ Switch 6-Port PoE+/++ Gigabit incl 1*1.25G SFP, 1x60W PD Port



IG-641BT-1.25G

Dual Power Inputs

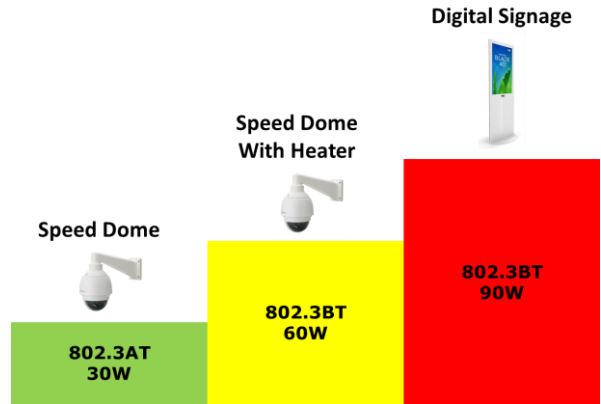
The IG-641BT-1.25G supports 2 DC power inputs for power redundancy. That greatly improves the reliability and uptime of a sensitive network in a harsh environment. When one of the DC power inputs fails, the second input will continue to power on the switch. The Switch supports an input of DC 48 ~ 55V.



Dual Power inputs
DC48~55V POE

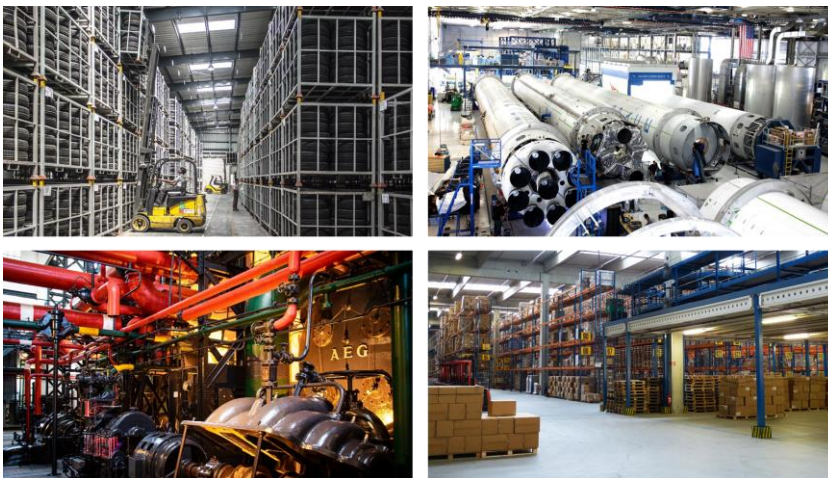
802.3BT 90W High Power output

AirLive IGM-642BT-2.5G Industrial switch supports the high-power output PoE++ at 90W for port 1. This higher output allows it to power more device than just an IP camera or Access point. The 90W PoE can be used to power on high power needed PoE Systems, Digital Signage or even PoE LED lighting and much more. Giving you much more flexibility on the usage, as you are no longer restricted to only 30W.



Industrial Application Harsh Environment

AirLive IG-641BT-1.25G Industrial switch meets the high standard demands of providing reliable networking connectivity, able to withstand harsh industrial environment, and cost-effectively.



Model	AirLive IG-641BT-1.25G
<p>Hardware</p> <ul style="list-style-type: none"> • Device Interface: <ul style="list-style-type: none"> 1 x 90W PoE 10/100/1000 RJ45 3 x 30W PoE 10/100/1000 RJ45 1 x Uplink Port Gigabit (60W PoE Power Receive) 1 x Gigabit SFP 6-port totally • Standard <ul style="list-style-type: none"> IEEE802.3u 100Base-TX / 100Base-FX IEEE802.3ab Gigabit 1000Base-T IEEE802.3z Gigabit SX/LX (optical fiber) IEEE802.3at/af/bt PoE IEEE802.3az Energy Efficient Ethernet • Industry standard compliant <ul style="list-style-type: none"> EMI: FCC Part 15 CISPR (EN55032) class A EMS: EN61000-4-2 (ESD), EN61000-4-4(EFT), EN61000-4-5(Surge) Shock: IEC 60068-2-27 Free Fall: IEC 60068-2-32 Vibration: IEC 60068-2-6 • LED Indicators: <ul style="list-style-type: none"> PWR (power supply), SYS(System), 1-4 PoE, 1-6 Link & ACT, 5 PD (receiving power) Mode (DIP Indicator) VLAN/Default/Extend) • Lighting Surge Protection: <ul style="list-style-type: none"> 6KV (general mode), 2KV (differential mode), ESD15KV • Mechanical <ul style="list-style-type: none"> Rugged high-strength Aluminum case, DIN35 Rail Mounting <p>Power and PoE</p> <ul style="list-style-type: none"> • Protocol: IEEE802.3at (30W), IEEE802.3af (15.4W), IEEE802.3bt (90W) • PoE Port: 4 • PoE Power Output / PoE Port: max. 90 watts (port 1) • PoE Power Output / PoE Port: max. 30 watts (port 2~4) <p>Switch Architecture Performance</p> <ul style="list-style-type: none"> • Fiber Medium <ul style="list-style-type: none"> Multi-mode Fiber: 850nm, 1310nm Transmission Distance: 550m/2Km Single-mode Fiber: 1310nm, 1550nm Transmission Distance 20/40/60/80/100/120Km • Switching architecture: Store and Forward <ul style="list-style-type: none"> Switch Capacity: Back-plan up to 12Gbps Switch packets Capacity: 8.928Mbps MAC Address: 8K Jumbo Frames: 10Kbytes Cache: 1MB VLAN: 4096 Transfer mode: Store and forward MTBF: 100000 hour 	<p>DIP Switch Control</p> <ul style="list-style-type: none"> • VLAN: Port isolation mode. In this mode PoE ports (1~4) cannot communicate with each other and can only communicate with the UP-Link port, Also the PoE Watch Dog function is Enabled. • Default: Normal mode, Normal communication with each port. The transmission distance is up to 100meter. PoE Watch Dog function not available. • Extend: Link extension mode, (port 4) PoE power supply and data transmission distance can be extended to 250 meter at the transmission rate 10Mbps. Also, the PoE Watch Dog function is Enabled. <p>Power Supply</p> <ul style="list-style-type: none"> • Input Voltage: DC48~55V • Input Type: 4 Pin Terminal (block V1+V1- V2+ V1- Supports Dual Power Input • PoE Input: Uplink Gigabit port (port 5) supports PoE power Supply, which can receive power up to 60W. <p>Environment</p> <ul style="list-style-type: none"> • Operating Temperature: -40°C to +85°C • Storage Temperature: -40°C to +85°C • Humidity: 5%~95%, non-condensing <p>Standard package of switch</p> <ul style="list-style-type: none"> • Product size: <ul style="list-style-type: none"> 14.5 x 10.8 x 4 cm(L*W*H) • Package size: <ul style="list-style-type: none"> 24 x 20.7 x 5.5 cm(L*W*H) • Product Weight/Package Weight <ul style="list-style-type: none"> W: 0.5KGs; W: 0.7KGs • Package content: <ul style="list-style-type: none"> 1 x Switch <p>Standard carton package</p> <ul style="list-style-type: none"> • Quantity: 20 pcs / 1 carton • Dimensions <ul style="list-style-type: none"> 49 x 43.5 x 30 cm • Carton Weight <ul style="list-style-type: none"> 15KG <p>Ordering Information</p> <ul style="list-style-type: none"> • Model: <ul style="list-style-type: none"> IG-641BT-1.25G • Name: <ul style="list-style-type: none"> Unmanaged Industrial Gigabit PoE++ 802.3bt switch 6 Ports including 1 Gigabit Uplink port with PD and 1-port SFP fiber port.

* Specification will be changed without prior notice

